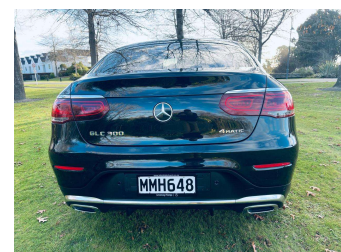
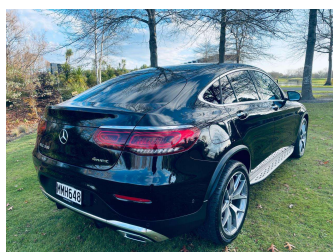
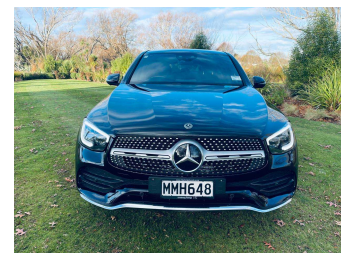


# 2019 Mercedes-Benz GLC300 AMG Line COUPE



## Purchase Price

**\$55,999**

Includes GST, Registration & Licensing

Finance may be available on this vehicle. Ask one of our friendly staff for more information.

Economy Cars

Gain peace of mind with Mechanical Breakdown Insurance. **Ask us how.**



## Top features

- » Alloys
- » Bluetooth
- » Car Alarm
- » Cruise Control
- » Luxury Interior
- » navigation system
- » NZ New
- » Push Button Start
- » Running Boards
- » Tow Bar

Body Style

**4 door, Coupe**

Odometer

**69,200 km**

Engine

**1991 cc, Internal Combustion**

Fuel Type

**Petrol**

Transmission

**Auto, 4WD**

Wheels

-

VIN

**WDC2533842F680391**

Interior

**Black, Leather**

Safety

-

Reg No.

**MMH648**

Ext Colour

**Black**

History

**NZ New, 4 owners**

Seats

**5 seats**

CO2 Emissions

-

Energy Economy

-

**Stock ID: 13041**

Economy Cars

Economy Cars | Phone 03 366 0440 | Email [john@economycars.co.nz](mailto:john@economycars.co.nz)  
Northwood, Christchurch 8051, New Zealand  
[www.economycars.co.nz](http://www.economycars.co.nz)