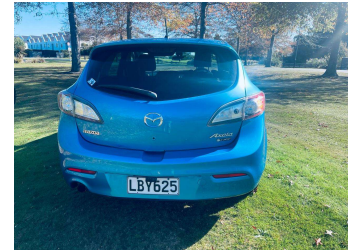
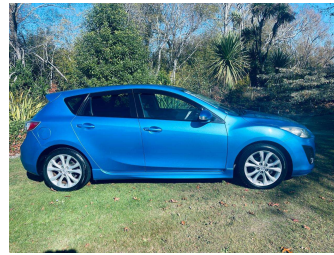


2010 Mazda Axela



Purchase Price

\$7,999

Includes GST, Registration & Licensing

Finance may be available on this vehicle. Ask one of our friendly staff for more information.

Economy Cars

Gain peace of mind with Mechanical Breakdown Insurance. **Ask us how.**



Top features

- » ABS
- » ABS Brakes
- » Airbags
- » Alloys
- » Car Alarm
- » Central Locking
- » Child seat anchor poin...
- » Climate Control
- » I-stop
- » Push Button Start
- » Reverse Camera
- » Stability/ESC Control

Body Style

5 door, Hatchback

Odometer

204,202 km

Engine

1990 cc, Internal Combustion

Fuel Type

Petrol

Transmission

Auto

Wheels

-

VIN

7AT0C13JX17114354

Interior

Black

Safety



Based on 2025 UCSR rating for 09-13 models

Reg No.

LBV625

Ext Colour

Blue

History

Ex-Overseas, 4 owners

Seats

5 seats

CO2 Emissions

★★★★☆

183 grams/km

Energy Economy

★★★☆☆

Annual fuel cost of \$2,980

7.6L per 100km

Cost per year is an estimate based on petrol price of \$2.80 per litre and an average distance of 14000 km. Emissions and Energy Economy figures standardised to 3P WLTP.

Stock ID: 13069

Economy Cars

Economy Cars | Phone 03 366 0440 | Email john@economycars.co.nz
Northwood, Christchurch 8051, New Zealand
www.economycars.co.nz